

Quick Start Guide

PL-485-USB

USB to RS-485 2-Wire Converter

1

Items Included

- USB to Serial Device
- Two Meter USB Cable
- CD ROM with Drivers
- This Quick Start Guide

2

General

One USB port is required for each installed device. The USB port can be native to the PC or it can be a USB port from an installed USB hub to the PC.

Note: The PL-485-USB works with USB 1.1 or 2.0 ports but has a maximum USB data rate of 12Mbps.

Ambient Temperature: 0 to 70° C

PROLON

3

Installation

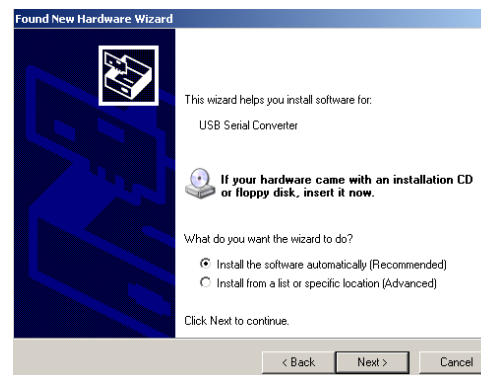
THE DRIVER INSTALLATION CONSISTS OF TWO STEPS. THE FOUND NEW HARDWARE WIZARD WILL RUN FIRST TO INSTALL THE USB DEVICE DRIVER AND WILL RUN A SECOND TIME TO INSTALL THE COM PORT DRIVER. DO NOT CANCEL THE FOUND NEW HARDWARE WIZARD UNTIL BOTH DRIVERS ARE INSTALLED.

The sample screen shots are from Windows XP.

- Insert the included driver CD into the PC's CD ROM drive
- Connect the converter to the PC's USB port with the supplied cable.
- The Found New Hardware Wizard will start.
- When prompted to connect to Windows Update to search for the driver, select "No, not this time" and click Next>



- Select Install the software automatically and click Next>



- A warning concerning Windows logo testing may be displayed. Click on Continue Anyway >



- Completing the Found New Hardware Wizard will be displayed. Click on Finish >



Important Note: The driver installation process consists of two steps; the found new hardware wizard will first install the USB device driver and then install the COM port driver. Do not cancel before both drivers are installed.

4

Verifying Installation

1. To verify the installation went correctly open the Windows Device Manager
 - Scroll down to Ports,
 - Expand the ports by clicking on the plus sign (+), this shows if the ports now exist on the PC.
 - If there are no exclamation points or other indicators of a problem the ports should be installed correctly and ready for use.
2. Verifying with a **loopback test**.
 - Loopback pin 1 to 2 on the terminal block connector, or pin 4 to 5 on the RJ45 connector. (Data(-) to Data(+)). Use the pin-out chart for the location of each pin.
 - Using Hyper Terminal or similar program, connect to the VCOM port. Set the desired baud rate. Ensure Hyper Terminal local echo is OFF. **(Note: Hyper Terminal is not provided with Vista or 2003 Server)**
 - Transmit data. If the same character string is returned, the test is good.

5

Pinouts

RS485 2 Wire Pinouts		
Signal	RJ45	Terminal Block
Data (-)	4	1 (Left)
Data (+)	5	2 (Middle)
IGND	8	3 (Right)

